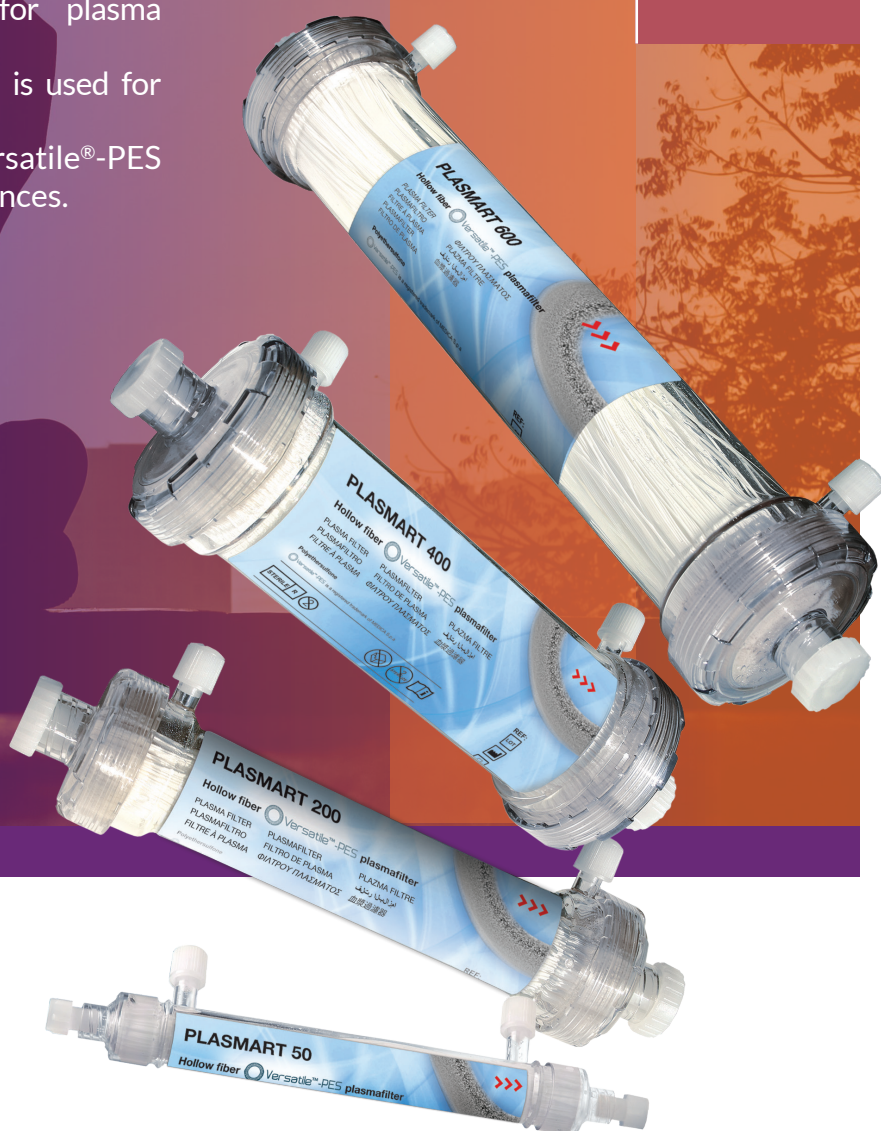


PLASMART

PLASMAFILTERS WITH VERSATILE-PES® MEMBRANE

Versatile-PES® is MEDICA's hollow fiber membrane specially developed for plasma separation. It is made of polyethersulfone and is used for plasmapheresis and blood donation. The asymmetric structure of Versatile®-PES offers excellent filtration performances.



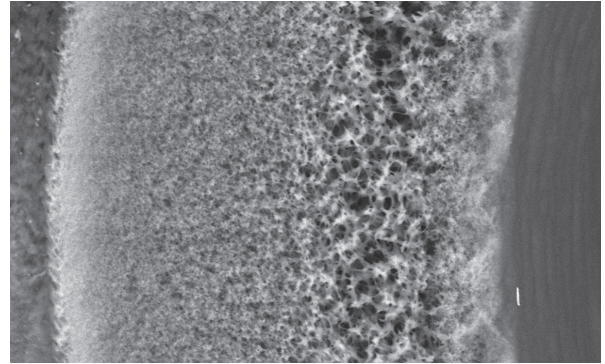
 Versatile-PES® is a registered trademark of MEDICA S.p.A.

MEDICA
SEAMLESS INNOVATION FOR LIFE QUALITY

MEMBRANE SPECIFICATIONS AND DATA

Versatile-PES® membrane has been designed to obtain:

- an **optimized diameter and wall thickness** to ensure a remarkable fiber mechanical resistance and the highest filtering surface in the minimum space;
- very **smooth internal membrane surface**, ensures **less damage to red blood cells** in the blood stream and minimizes hemolysis risk.
- high **separation performances**, in term of plasma proteins crossing the membrane (over 90%);
- an optimized **membrane cut-off**, resulting in the possibility to use a significant TMP value.



| | Plasmart 25 | Plasmart 50 | Plasmart 100 | Plasmart 200 | Plasmart 400 | Plasmart 600 | Plasmart 700 | Plasmart 1000 |
|---|---------------------------------------|---------------|---------------|---------------|---------------|---------------|---------------|---------------|
| Hollow fiber material | Versatile-PES® (polyethersulfone) | | | | | | | |
| Intended use | pediatric | | | | adult | | | |
| Membrane area (m²) | 0.01 | 0.05 | 0.10 | 0.20 | 0.40 | 0.60 | 0.70 | 1.0 |
| Fiber internal diameter (µm) | 300 | | | | | | | |
| Fiber external diameter (µm) | 470 | | | | | | | |
| Fiber wall thickness (µm) | 85 | | | | | | | |
| Fiber length (mm) | 60 | 127 | 140 | | 225 | | 280 | |
| Filter housing internal diameter (mm) | 11 | 14 | 24 | | 39 | | 43 | |
| Internal fiber volume (ml) | 1.2 | 3.9 | 8.6 | 13.2 | 30.5 | 48.5 | 56.6 | 78.3 |
| Port volume (ml) | 0.5 | | 2.4 | | 5.6 | | 10.0 | |
| Priming blood volume (ml) | 1.7 | 4.4 | 11 | 15.6 | 36.1 | 54.1 | 62.2 | 88.3 |
| Max. TMP (mmHg)* | 100 | | | | | | | |
| Max. blood flow (ml/min) | 20 | 50 | 80 | 100 | 160 | 240 | 280 | 390 |
| Plasma flow | 10-30 % of blood flow | | | | | | | |
| Potting compound | polyetherane | | | | | | | |
| Cartridge housing material | copolyester BPA FREE or polycarbonate | | | | | | | |
| Cartridge blood port material | | | | | | | | |
| Cartridge blood connectors | LLF | LLM | Twist Lock | | | | | |
| Cartridge filtrate/dialysate connectors | LLF - Female luer lock | | | | | | | Hansen |
| Unit length (mm) | 90 | 155 | 180 | | | 265 | | 325 |
| Sterilization method | ETO or beta rays | | | | | | | |
| Product code ETO | M90291 | M03863 | M03864 | M03865 | M03866 | M03867 | M90018 | M03868 |
| UDI-DI code | 8056992332829 | 8033772327015 | 8033772327022 | 8033772327039 | 8033772327046 | 8033772327053 | 8033772327084 | 8033772327060 |
| Q.ty/box | 15 | 10 | 10 | 10 | 6 | 6 | 6 | 6 |
| Product code beta rays | | M03857 | M03858 | M03859 | M03860 | M03861 | M90017 | M03862 |
| UDI-DI code | NA. | 8033772325479 | 8033772325486 | 8033772325493 | 8033772325509 | 8033772325516 | 8033772327077 | 8033772325523 |
| Q.ty/box | | 15 | 10 | 10 | 6 | 6 | 6 | 12 |

Technical features are subject to change without prior notice.

BRO-PLS-VERSATILE-ENG-REV02 – CDP150725A

* Tested with human blood (Hct 32 ± 3%; TP 60 ± 5 gr/L).

Distributed by

