

AFERsmart Plus™ Therapeutic apheresis system

AFERsmart Plus™ allows you to perform the following treatments:

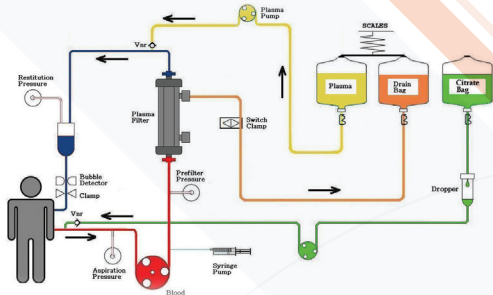
- Therapeutic Plasma exchange (Plasmapheresis)
- Double filtration plasmapheresis
- Selective apheresis
- Double filtration plasmapheresis and adsorption
- Hemoperfusion

AFERsmart Plus™ Main features:

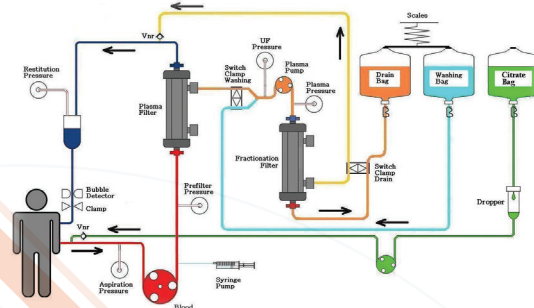
- Air-free pressure transducers (type DOME)
- Pre-assembled line kit
- Three peristaltic pump
- One syringe pump
- Double scale
- Heparin and/or citrate anticoagulant
- Proprietary self-adjusting clamps for plasma flow control (plasmapheresis)
- Automatic rinsing procedure of the plasma fractionator
- KALOS heater for blood/replacement fluid (optional)
- External console (optional)



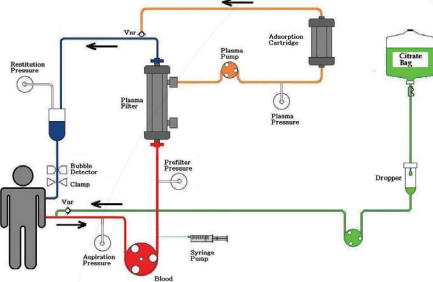
AVAILABLE TREATMENTS



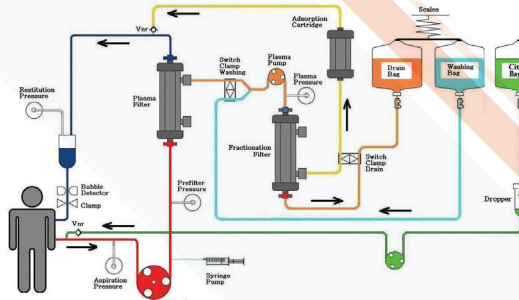
THERAPEUTIC PLASMAPHERESIS



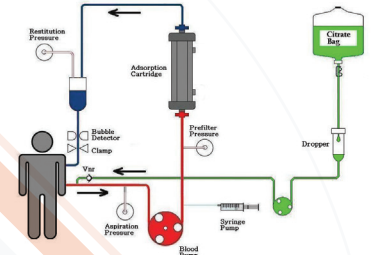
DOUBLE FILTRATION PLASMAPHERESIS



SELECTIVE APHERESIS



DOUBLE FILTRATION PLASMAPHERESIS AND ADSORPTION



HEMOPERFUSION

Operating conditions	Temperature from 15°C to 35°C Relative humidity from 35% to 75% Atmospheric pressure from 700 to 1060 hPa
Transport conditions	Temperature from -10°C to +50°C Relative humidity from 35% to 85% Atmospheric pressure from 500 to 1060 hPa
Power supply	230 VCA (±10%) 110 VCA (±10%) 50Hz/60Hz
Device lifetime	10 years
Power adsorption	Power adsorption in the worst conditions is 110 VA
Mechanical structure	Height: 365 mm Width: 375 mm; Depth: 300 mm Trolley dimensions: Trolley Base: 440 x 500 mm Maximum height pole: 1970 mm Trolley weight: 36Kg
Blood pump	Maximum flow range: [0 to 450] ml/min Resolution: 5 ml/min
Plasma pump	[0 to 200] ml/min Adjustable flow range (by the operator): [0 to 30] % in relation to blood pump speed Resolution: 1ml/min
Citrate pump	Reachable flow range: [0 to 2000] ml/h Resolution: 1 ml/min
Syringe pump	Supported syringes: 30 ml Flow rate: [0.20] ml/h Sensitivity: 0.1 ml Accuracy: +/- 0.2 ml or 2%
Venous pressure	Range: [-100, +500] mmHg Sensitivity: 1 mmHg Displayed resolution: 5 mmHg
Venous pressure (type DOME)	Range: [-300, +300] mmHg Sensitivity: 1 mmHg Displayed resolution: 5 mmHg
Pre-filter pressure (type DOME)	Range: [-100, +500] mmHg Sensitivity: 1 mmHg Displayed resolution: 5 mmHg
Plasma pressure (type DOME)	Range: [-100, +500] mmHg Sensitivity: 1 mmHg Displayed resolution: 5 mmHg
UF pressure (type DOME)	Range: [-300, +500] mmHg Sensitivity: 1 mmHg Displayed resolution: 5 mmHg

Bubble detector	Ultrasonic sensor. Sensitivity: 0.1 ml (at the flow rate of 100 ml/min)
Washing and draining scale	Range: [0.6] kg Sensitivity: 1 g Accuracy: ±20 g or ±1%
Washing clam	Switch clamp with 4 independent ways Maximum closing pressure: 600 mmHg
Drain clam	Switch clamp with 2 independent ways Maximum closing pressure: 600 mmHg
Blood and hemoglobin detector	Detects traces of blood or hemoglobin in the ultra-filtered fluid <ul style="list-style-type: none"> Optical sensor based on the spectroscopic analysis Sensitivity: 0.5% of blood or 0.5% of hemoglobin
Blood detector	Optical sensor able to detect blood inside the venous line. Sensitivity: 0.5%
Drip sensor	Check the citrate flow by counting the drops. Drop volume = 50µL + -10%
User interface	The HMI consists of a colourful, integrated 5.7" display, a rotary selector to set the parameters and a membrane keyboard containing 3 keys for the most critical functions: blood pump's start and stop, alarm reset, assistance on the current operating alarm.
Serial port RS232	Used to communicate with the external console and for software upgrades
External console (optional)	A 10" external console. Reads data about the device treatment and pictures the most important informations for the operator. Saves the informations in an internal register and provides the automatic download of it on a USB stick.

AFERSMART PLUS™ DISPOSABLES	
Code	
M90420R	AFERSmart Plus™ DFPP line with plasma heating bag
M90422	AFERSmart Plus™ selective apheresis line
M90424	AFERSmart Plus™ double filtration adsorption line
M90426	AFERSmart Plus™ HEMOPERFUSION line
M90428	AFERSmart Plus™ PLASMA EXCHANGE line

MANUFACTURER

MEDICA S.p.A. Via degli Artigiani, 7 | 41036, Medolla (Modena) Italia

Tel: +39 0535 51159 | Fax: +39 0535 52605 | Email: info@medica-spa.com | www.medica-spa.com



SEAMLESS INNOVATION FOR LIFE QUALITY



CE 0476 UNI EN ISO 9001:2015 UNI CEI EN ISO 13485:2021

Technical features are subject to change without prior notice
This document does not have contractual value

M27434 REV03 - CDP021023A